

SECURITY PLUS nG



FRAMEWORK

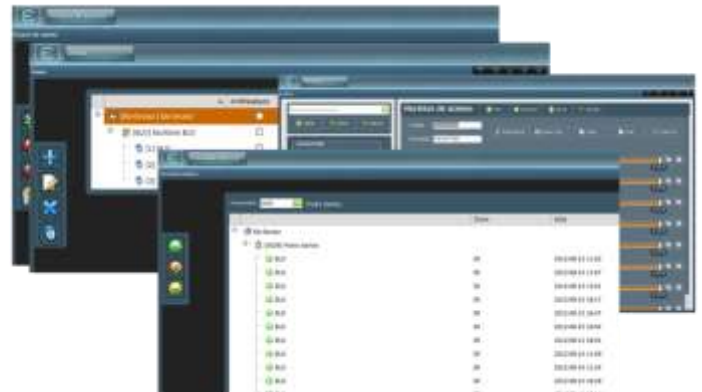
Security is something that you get, especially when conditions are created to prevent and minimize abnormal occurrences.

Security Plus nG is the designation of the applicational software developed by ELO - SI and that works on a Web platform, and already prepared for the new paradigm of distributed computing.

The Security Plus nG is a solution for management and access control and has as main objective to limit people's access to certain areas for days and at predefined times.

The user can easily configure the software, set and change parameters according to the intended level of security.

The Security Plus Ng is prepared for integration with access terminals provided by ELO - SI.



SOLUTION

The access to one restricted zone is normally controlled through physical barriers, for instance, a door, a barrier, a turnstile, being granted access via the electronic control system and after configuring access control.

- Configuration of access profiles (entrance / exit);
- Definition of user groups with access to specific areas at predefined times per day;
- Integration of external devices for identification and validation of the person wich intends access.

The characteristics presented and applied should be reflected in the software modules, even when it is complemented with VISITORS to managing public external (suppliers, customers, etc.) that access to places or organizations that sporadically and for a short period time.



SECURITY PLUS nG



FEATURES

- Software control and management of accesses per day, time, place and person;
- Multi-user;
- Multi-enterprise;
- Multi-language;
- Configurable Desktop;
- Platform bringing together functionalities according to the complexity of each project.

ADVANTAGES

- Restricted to persons in certain places;
- Determination of the day and the hour that you can access a place;
- Limitation of the access on special days;
- Limitation of access by type or group of users;
- Integrated solution provides different technologies: biometrics, RFID and PIN, depending on the site characteristics and client preferences;
- A single application to control of the different components of access (Intrusion, Fire, CCTV, Garages, pedestrian access to internal and external publics to the organization).

REQUIREMENTS

SOFTWARE – SERVER:

- Win2003 Server and Win2008 Server;
- Operating System 32 and 64 bits;
- SQL Server from version 2005;
- Oracle from version 9G;
- Application published in IIS 6 or higher.

SOFTWARE – CLIENT

- Internet browsers: Internet Explorer 8; FireFox 6; Google Chrome 14; Opera 11; Safari 5;

COMPLEMENTARY SOLUTIONS

- Time HR nG – Time and Attendance;
- Visitors – Management of foreign visits;
- Intruder & Fire – Intrusion and fire detection;
- Security LPR – License plate recognition;
- Vídeo Security – Video cameras for monitoring;
- Warnings & dashboard – Alerts and Notifications

